

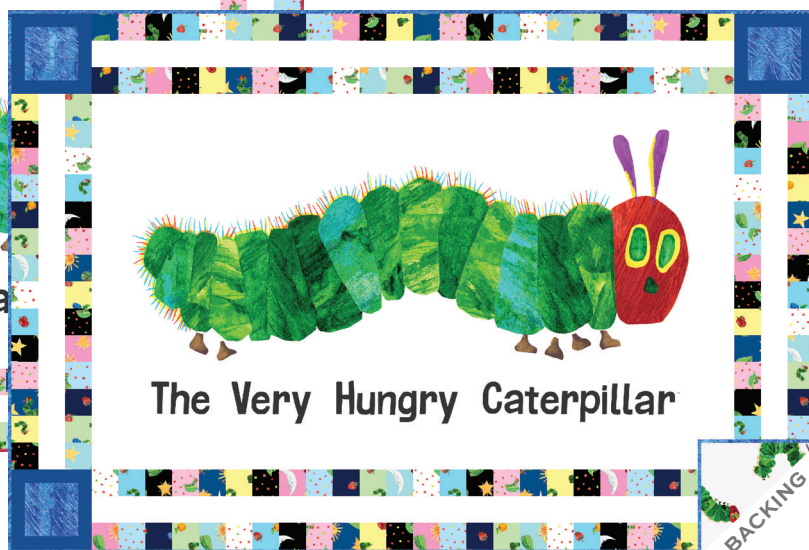
The Very Hungry Caterpillar - Snack Time

THE WORLD OF ERIC CARLE



Snack Time Quilt designed by: **Nelson Salsa** • Quilt Size: **40" x 60"**

Skill Level: **Advanced Beginner**



andover : makower.uk

Free Pattern Download Available

1384 Broadway New York, NY 10018

Tel. (800) 223-5678 • andoverfabrics.com

Snack Time



Featuring Andover Fabrics new Collection: The Very Hungry Caterpillar - Snack Time from
The World of Eric Carle

Quilt designed by Nelson Salsa

Quilt finished 40" x 60"

Quilt Cutting Directions

Note: Read assembly directions before cutting patches. Borders are cut to exact length required plus ¼" seam allowance. WOF designates the width of fabric from selvedge to selvedge (approximately 42" wide).

- Fabric A** Cut (1) 23 ½" x 43 ½" rectangle, centered on the panel.
- Fabric B** Cut (3) 3 ½" x WOF strips. Sew the strips together with diagonal seams and cut (2) 3 ½" x 43 ½" strips.
Cut (2) 3 ½" x 29 ½" WOF strips.
Cut (3) 2 ½" x WOF strips. Sew the strips together with diagonal seams and cut (2) 2 ½" x 48 ½" strips.
Cut (2) 2 ½" x 28 ½" WOF strips.
- Fabric C** Cut (1) 4 ½" x WOF strip. Sub-cut the strip into (4) 4 ½" squares.
Cut (6) 2 ½" x WOF strips for the binding.
- Fabric D** Cut (1) 1 ½" x WOF strip. Sub-cut the strip into (8) 1 ½" x 4 ½" strips.
Cut (2) 1 ½" x WOF strips. Sub-cut the strips into (8) 1 ½" x 6 ½" strips.
- Fabric E** From E-1 cut (13) 2 ½" squares.
From E-2 cut (13) 2 ½" squares.
From E-3 cut (13) 2 ½" squares.
From E-4 cut (13) 2 ½" squares.
From E-5 cut (12) 2 ½" squares.
From E-6 cut (13) 2 ½" squares.
From E-7 cut (13) 2 ½" squares.
From E-8 cut (13) 2 ½" squares.
From E-9 cut (13) 2 ½" squares.
From E-10 cut (13) 2 ½" squares.
From E-11 cut (12) 2 ½" squares.
From E-12 cut (11) 2 ½" squares.
- Backing** Cut (2) 48" x WOF strips. Sew the strips together and trim to make (1) 48" x 68" backing.

Fabric Requirements

Quilt - Red Version		Yardage	Fabric
Fabric A	panel	1 panel	179-R
Fabric B	sashing	1 yard	CS-10-COTTONBALL*
Fabric C	blocks, binding	⅔ yard	P0260-3476-R**
Fabric D	blocks	¼ yard	CS-10-Redwood*
Fabric E	border	(1) Fat ¼ Bundle	1438-B 1439-E 1438-K 1440-Y 1439-B 1438-E 1439-K 1440-LB 1438-L 1439-LB 1440-G 1440-B
Backing		2 ¾ yards	5281-M**
Quilt - Blue Version		Yardage	Fabric
Fabric A	panel	1 panel	179-T
Fabric B	sashing	1 yard	CS-10-COTTONBALL*
Fabric C	blocks, binding	⅔ yard	P0260-3476-B**
Fabric D	blocks	¼ yard	CS-10-Sapphire*
Fabric E	border	(1) Fat ¼ Bundle	1438-B 1439-E 1438-K 1440-Y 1439-B 1438-E 1439-K 1440-LB 1438-L 1439-LB 1440-G 1440-B
Backing		2 ¾ yards	5281-M**

*Century Solid Collection

**The Very Hungry Caterpillar Classics Collection

Snack Time

Making the Quilt

Note: Any panel from the collectiopns by Eric Carle of The Very Hungry Caterpillar works with this pattern.

1. Block Assembly

Sew (1) 3 1/2" x 43 1/2" Fabric B strip to each side of the 23 1/2" x 43 1/2" Fabric A panel. Sew (1) 3 1/2" x 29 1/2" Fabric B strip to each side of the Fabric A panel to make the Center Block (Diagram 1).

Trim the block to measure 28 1/2" x 48 1/2".

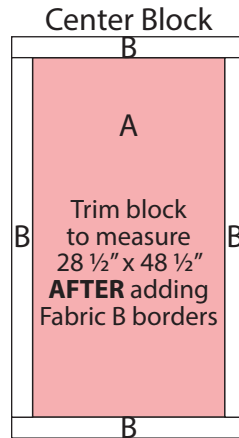


Diagram 1

- Sew (1) 1 1/2" x 4 1/2" Fabric D strip to each side of (1) 4 1/2" Fabric C square. Sew (1) 1 1/2" x 6 1/2" Fabric D strip to the top and to the bottom of the Fabric C square to make (1) 6 1/2" Block One square (Diagram 2). Repeat to make (4) Block One squares total.

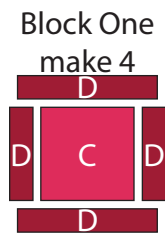


Diagram 2

- Refer to Diagram 3 and sew together (24) assorted 2 1/2" Fabric E squares to make the left column. Repeat to make the right column. Sew together the left column, (1) 2 1/2" x 48 1/2" Fabric B strip and the right column, lengthwise and in that order from left to right, to make the Left Side Border.
- Repeat Step 3 and refer to Diagram 4 for fabric identification and placement to make the Right Side Border.

Left Side Border

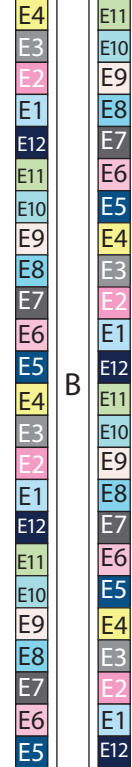


Diagram 3

Right Side Border

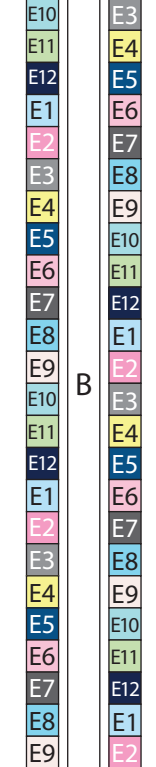


Diagram 4

- Refer to Diagram 5 and sew together (14) assorted 2 1/2" Fabric E squares to make the top row. Repeat to make the bottom row. Sew together the top row, (1) 2 1/2" x 28 1/2" Fabric B strip and the bottom row lengthwise and in that order from top to bottom. Sew (1) Block One square to each end of the newly sewn strip to make the Top Border.

Top Border

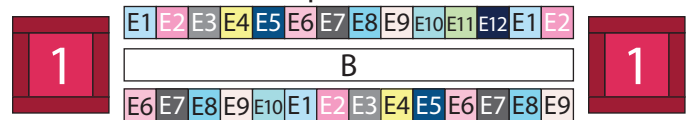


Diagram 5

- Repeat Step 5 and refer to Diagram 6 for component identification and placement to make the Bottom Border.

Bottom Border

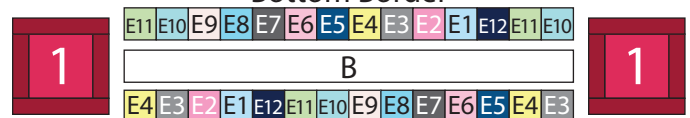


Diagram 6

Snack Time

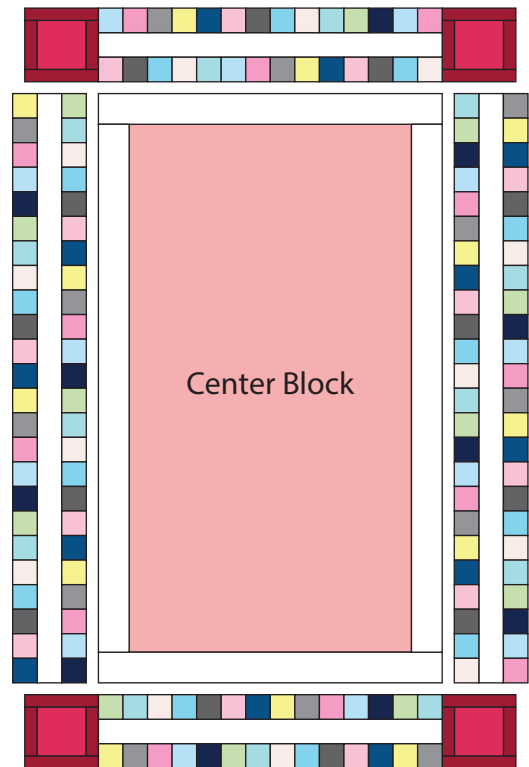
Quilt Top Assembly

(Refer to the Quilt Layout when assembling the quilt top.)

7. Sew the Left Side Border and Right Side Border to the left and right sides of the Center Block.
8. Sew the Top Border and the Bottom Border to the top and to the bottom of the Center Block.

Finishing the Quilt

9. Layer and quilt as desired.
10. Sew the (6) Fabric C binding strips together, end to end with a 45-degree seams, to make the binding. Fold this long strip in half lengthwise with wrong sides together and press.
11. Bind as desired.



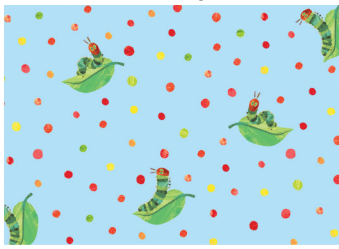
Quilt Layout

The Very Hungry Caterpillar - Snack Time

THE WORLD OF ERIC CARLE



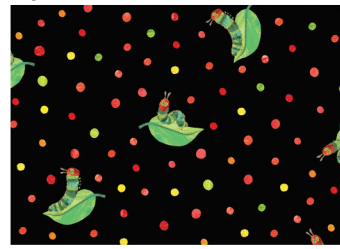
Note: Each quilt uses (1) The Very Hungry Caterpillar - Snack Time Fat Quarter Bundle.



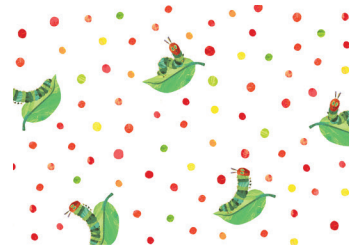
1438-B



1438-E



1438-K



1438-L



1439-B



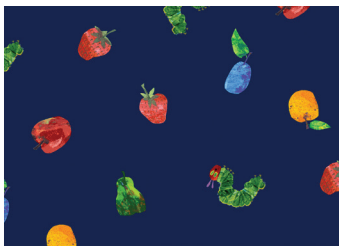
1439-E



1439-K



1439-LB



1440-B



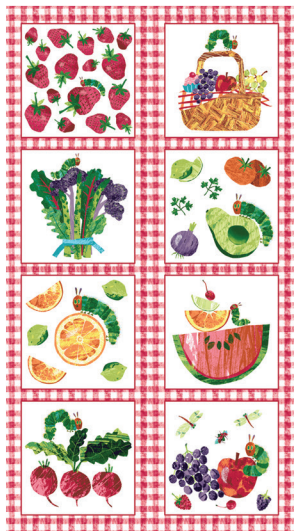
1440-G



1440-LB



1440-Y



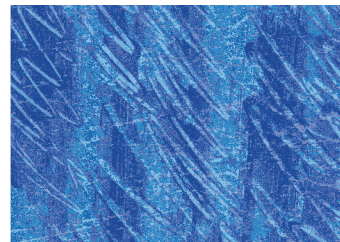
179-R

1 panel
(Red Version)



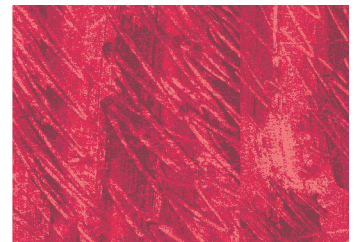
179-T

1 panel
(Blue Version)



P0260-3476-B
(includes binding)

$\frac{2}{3}$ yd
(Blue Version)



P0260-3476-R
(includes binding)

$\frac{2}{3}$ yd
(Red Version)



5281-M**
(includes backing)

$2 \frac{3}{4}$ yds
(per version)



CS-10-Cottonball* 1 yd
(per version)

CS-10-Redwood* $\frac{1}{4}$ yd
(Red Version)

CS-10-Sapphire* $\frac{1}{4}$ yd
(Blue Version)

*Century Solid Collection

** The Very Hungry Caterpillar
Classics Collection

Bolts needed to cut project kits: 15 yds = 1 bolt

*Century Solids: 10 yds = 1 bolt

Fabrics (except panels) shown are 25% of actual size.

Free Pattern Download Available

1384 Broadway New York, NY 10018

Tel. (800) 223-5678 • andoverfabrics.com

andover • makower uk